

In the news

Sunday Times HOME
27 February 2011

08 | *build* UNDER \$300,000

A BLOCKBUSTER

THE home theatre continues to be one of the must-haves for many homebuyers. In a recent survey by Summit Homes, it ranked as the fourth favourite room in the house after the living area, kitchen and alfresco.

"It goes to show that homebuyers still value a dedicated space to relax in and watch TV in style," says Tim Underwood, sales and marketing manager at Summit Homes.

Summit estimates that clients are spending between \$10,000 and \$20,000 kitting out their theatre room in search of an authentic cinema experience at home.

"The home theatre is a room that allows for family interaction and escapism, particularly when your favourite show is playing and you can sit back and watch it in style," Tim says.

Style and comfort certainly took top billing when Summit designed the home theatre in its aptly named Astor display home in South

Yunderup. The home's name may be synonymous with grand old movie theatres, but this four-bedroom family home is an entertainer for the modern family. Dressed with red velvety seats, heavy drapes and a huge screen, the home theatre is reached via a long corridor to enhance the cinema-style experience.

"The design takes into account the room's furnishing to ensure the seating works well in relation to the screen," Tim says.

The size and position of the windows were carefully considered and the room was placed away from other areas of the house so that noise could be controlled effectively.

But the Astor isn't just about popcorn, DVDs and big-screen sports. With a large kitchen and living area that wraps around a good-sized alfresco, it's geared up for families who love to entertain both indoors and out.

There's a seamless connection between the everyday areas and the outdoor room so that together they feel like one large inside/outside space. Double stacker doors and corner windows contribute to the open, easy flow.

In the display home, an optional extension has been added to the alfresco to further increase opportunities for outdoor living.

Featuring a cascading water feature and twin stone-clad walls, it helps to create the holiday-at-home ambience many buyers are looking for.

In the galley-style kitchen overlooking the living areas is a long "floating" island bench with waterfall ends.

The kitchen's crisp contemporary style is enhanced by wide stainless steel appliances, solid surface benchtops, overhead cupboards, display boxes above the fridge/freezer recess and a walk-in pantry.

Well away from the living and entertaining areas is the snazzy master suite where the design team have used the bath to divide the bedroom from the ensuite.

The three minor double bedrooms have been grouped together in a separate wing, along with the family bathroom, laundry, toilet and walk-in linen cupboard.

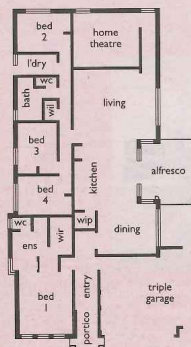
Paula Aubin



entrust

**MASTER BUILDERS
BANKWEST HOUSING
EXCELLENCE AWARDS 2011**

Display homes \$230,000 to \$260,000



ASTOR

- * **builder**
Summit Homes
- * **price**
\$262,758 (South-West \$279,950)
- * **location**
Bremer Way, South Yunderup
- * **open**
Today, 1pm-5pm; Monday and Wednesday, 2pm-5pm; Saturday, 1pm-5pm
- * **phone**
9333 0888 (South-West 9722 0300)
- * **website**
www.summitnewhomes.com.au

essentials

- * **size**
317.01sq m, including portico, alfresco and triple garage
- * **width**
15.95m
- * **depth**
25.63m
- * **bedrooms**
Four
- * **bathrooms**
Two
- * **garage**
57.4sq m

features

- * Home theatre
- * Triple garage
- * Optional outdoor extension
- * High ceilings

trade secrets

- * The open-plan ensuite gives the master bedroom more of a resort-hotel feel.

Perth Metro: 9333 0888
South West: 9722 0300

