

# In the news

Sunday Times HOME

30 January 2011



2011  
**MASTER BUILDERS  
 BANKWEST HOUSING  
 EXCELLENCE AWARDS 2011**  
 Display Homes \$210,000 to \$230,000



- \* **builder**  
Summit Homes
- \* **price**  
\$241,351 (metro) or  
\$259,950 (South-West)
- \* **location**  
Safford Ave, Avelley
- \* **open**  
Today, 1 pm-5 pm; Monday  
and Wednesday, 2 pm-5 pm;  
Saturday, 1 pm-5 pm
- \* **phone**  
9333 0888 (metro) or  
9722 0300 (South-West)
- \* **website**  
www.summitnewhomes.com.au

#### essentials

- \* **size**  
284.23sq m, including alfresco,  
porch and garage
- \* **width**  
12.95m
- \* **depth**  
26.39m
- \* **bedrooms**  
Three
- \* **bathrooms**  
Two
- \* **garage**  
36.86sq m

#### features

- \* Theatre
- \* Study
- \* "Floating" breakfast bar
- \* Side entry
- \* Rear master suite

#### trade secrets

You can visually extend the porch with the optional mini pergola and extra rendered pier.

## LOVE ME SLENDER

**T**HE Aurora by Summit Homes is a contemporary three-bedroom home that's worth looking at from all angles. By turning the double-door entry so that it faces the side, rather than to the front, the Summit design team has created a striking narrow-lot elevation that isn't dominated by the garage.

"The Aurora's large corner windows to the study at the front of the home also make for an appealing design aspect and the side entry allows for added privacy and security," says Tim Underwood, sales and marketing manager at Summit.

The company has taken ideas and feedback from its clients and blended everything together to create a functional family home designed to fit on a 13.78m-wide lot.

"We are finding that our customers are approaching us for new home designs to accommodate narrow lots due to the availability of land and the trend that smaller blocks are closer to the CBD," Tim says.

The builder offers 14 new home designs for lots measuring 14m wide or less.

Buyers don't want to skimp on specification either. Just because they're building on a small lot doesn't mean they want to forgo all the finishing touches.

The display specification Freestyle solid-surface benchtops in the kitchen, ensuite and family bathroom, and 31-course-high ceilings in the entry, study, living/entertaining areas and the master suite, plus Ariston kitchen appliances, Fremantle cornices and square Caroma Liano vanity basins.

Recognising that today's market also demands flexibility, Summit has developed the Aurora 195, a smaller and less specy version of the home that can be built from \$190,203 and from \$199,995 in the South-West.

"The Aurora 195 has been designed to fit a 13m-wide lot but offers a total floor area of 253sq m," Tim says.

"It still boasts three bedrooms and two bathrooms but has been designed to maximise a client's space requirements and budget on a narrow lot."

It doesn't matter which version of the Aurora fits your block and budget best, both offer

an easy-flowing floor plan with well-zoned bedroom, living and entertaining areas.

The hotel-worthy rear master suite, with direct access to the alfresco, has a deep walk-in wardrobe and an ensuite with bath, double vanities and a large shower. The other two bedrooms are doubles and in the display version each has a walk-in wardrobe.

There is also a home theatre off the entry and a study that could be used as a nursery or fourth bedroom.

Throughout the display home, Summit has added surprise features that bring extra designer flourish to the fit-out.

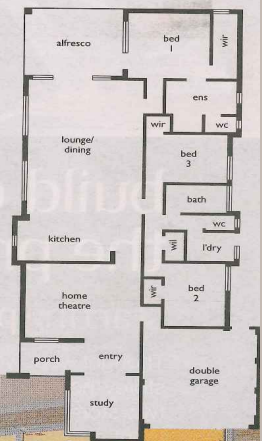
In the kitchen, for example, lengths of

benchtop in contrasting colours have been used, with a raised section "floating" to create a breakfast bar with a twist. Not only does this open design keep the look light and airy, but it also offers a handy space in which to tuck kitchen stools out of the way.

Draining grooves have been moulded into the top of the benchtop alongside the in-built double-bowl sink and a display shelf has been added above the fridge/freezer recess.

To help define the home theatre from the entry hallway, the Summit design team has showcased a super-low wall with built-in storage and display units.

Paula Aubin



Perth Metro: 9333 0888  
 South West: 9722 0300

