

In the news

Weekend West NEW HOMES

25 June 2011

Green rating for

YASMIN PEARCE

The new Envy display by Summit Homes in Provenance is aiming to turn homebuyers green in more ways than one.

Living up to its name, this display's stated aim is to turn people green with envy, while it also boasts strong "green" environmental credentials.

Exceeding the 6-star energy rating with a triumphant 8.3 stars at its displayed location, the design offers the best of both worlds for people seeking a

luxurious family home which minimises the need for additional heating and cooling.

Summit Homes South West general manager David Hunt said the Envy was ideal for those who wanted to entertain in style.

"In a recent survey our customers told us that a large alfresco coupled with integrated living areas was their number one consideration," Mr Hunt said.

"Because we're built around people and sustainability, we

responded with this enviable design, but also added a few extra-special touches."

"The 8.3-star energy rating means that the home will stay cooler in summer and warmer in winter.

"Homebuyers could save up to 60 per cent off their heating and cooling costs," Mr Hunt said.

The Envy's elevation has a classic appeal, with traditional veranda posts accentuating the front porch and extensive use of glass to the front of the main suite.

energy saver Envy

Through the double-door entry, the wide hall with high ceilings sets the tone for the rest of the house.

This is particularly true in the open-plan living and dining zone, where the cathedral-style ceiling adds a sense of grandeur to the space.

To visually define the kitchen, the ceiling is lowered and a wide breakfast bar separates the spaces. The kitchen offers an abundance of storage and preparation space and quality finishes including solid Freestyle benchtops, a 900mm Ariston range hood, electric oven and gas hotplate.

The kitchen has direct access to the extra-large alfresco area, which offers more than 35sqm of space. Sliding doors between the alfresco and living/dining areas, as well as direct access into the games room, highlight the excellent indoor/outdoor entertaining options and ensure nobody is left out of the picture.

At the front of the home, the main suite includes a relaxing retreat area plus a sizeable walk-in robe. The ensuite is in a class of its own, with an elegant semi-frameless shower and twin vanities with ample storage space.

A highlight is the ensuite's direct access to the outdoors, where a freestanding bath has been set amid tropical-style gardens.

The secondary bedrooms and children's activity area are all to the rear of the home for extra privacy.

Variations of the Envy are available in the South West from \$209,035.



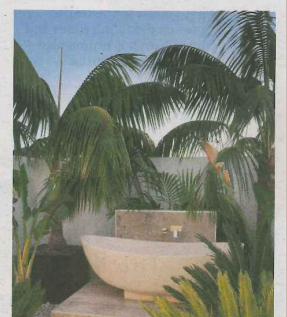
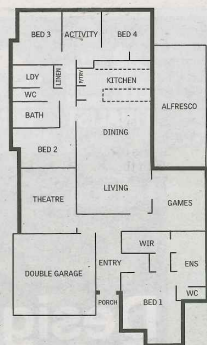
The kitchen offers plenty of storage, preparation space and quality finishes.

The Envy

ADDRESS: Nougat Crescent, Provenance, Busselton
PRICE: \$294,900 (South West)
\$289,990 (Perth metro)

BUILDER: Summit Homes South West
PHONE: 9722 0300

Four bedrooms, two bathrooms, home theatre, games room, activity room, open-plan living/dining zone with raking ceiling, alfresco area



Perth Metro: 9333 0888
South West: 9722 0300

