

# In the news

The West Australian NEW HOMES  
21 January 2012

Display Home Baldvis

56

57



Different ceiling heights help define the kitchen, dining and living areas within the open-plan hub of the home, which is connected to the separate study via a viewing window.



## Cosmopolitan gets the mix just right

MAUREEN EPPEN

A streamlined bar linking the home theatre to the kitchen inspired the name of Summit Homes' new Cosmopolitan display at Parkland Heights in Baldvis.

The bar can be accessed from both areas, and includes corner cabinets and a raised countertop overlooking the elevated, cinema-style seating platform in the theatre room.

Summit Homes' sales and marketing manager Tim Underwood said the bar was in the perfect spot for entertaining. "We often talk about homes mixing equal parts entertainment and relaxation, and with this home we've added a twist to deliver a cocktail just right for entertaining," Mr Underwood said.

The main living zone also

works well for people who like to entertain, with the kitchen forming an attractive and practical hub and glazed doors in the living and dining areas opening to a corner alfresco area at the back.

Although not included in the display price, laminated boards with negative detail at the seams provide an attractive feature in the side wall of the living room, near a sleek built-in gas heater. Prices for both are available on request.

In the kitchen, a long bench facing the living room has a boxed upstand to screen underslung sinks from sight and the fridge recess is also tucked away from view, yet easily accessed. A broad breakfast bar at one end is suitable for casual dining or as a buffet.

Artisan cooking appliances are fitted in a parallel row of

cabinets against a wall near the two-door pantry. Overhead cabinets also provide extra storage space within reach. A dropped ceiling above the kitchen contrasts with the 31-course ceiling in the dining area and 34-course recessed ceiling in the living room.

At the front of this zone, the separate study has a viewing window that allows its occupants to feel connected to family members in the other rooms while maintaining a degree of privacy.

Bedrooms are zoned to separate parents from children, with the main suite at the front and minor bedrooms along a short hall off the dining area.

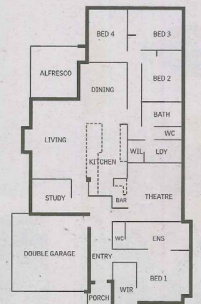
"With its resort-style influences, the master suite at the front of the home includes an oversized walk-in robe and ensuite reminiscent of a

five-star resort — with 31-course ceilings, a double vanity with Freestyle benchtop and a feature bath," Mr Underwood said.

Each spacious minor bedroom has a two-door built-in robe. The nearby bathroom has a standard layout that works well, with an enclosed corner shower, central vanity with square basin and Freestyle top, and a bath below the window.

From the street, a feature blade wall of Unique Limestone rendering with an optional waterfall is the focal point and an exposed horizontal girder adds interest in front of the blade wall and central porch. A big corner window on the right is balanced with the double garage on the left and the uncluttered roof of shingled tiles completes the contemporary look.

Variations of the Cosmopolitan can be built from \$189,280.



The Cosmopolitan

ADDRESS: Ruskin Place, Baldvis  
PRICE: \$291,940 (metro)  
BUILDER: Summit Homes  
PHONE: 9333 0888

Four-bedrooms, two-bathroom home with open-plan living zone, separate theatre and study, alfresco area, double garage, feature limestone cladding



Perth Metro: 9333 0888

Bunbury: 9722 0300

Busselton: 9753 7800

Margaret River: 9757 9120

