

In the news

Weekend West NEW HOMES

5 March 2011

Oriental touch proves popular

YASMIN PEARCE

A shingle-tiled roof sets off contemporary feature panelling and rendered walls to add an oriental touch to the Lotus, by Summit Homes.

Inside, space is abundant. The central living area — featuring a high cathedral ceiling — opens out to the alfresco area with optional outdoor kitchen.

Summit Homes South West general manager David Hunt said that the display had received a fantastic response since opening.

"The home has been very successful over the past 12 months and seems to be going from strength to strength," he said.

"Clients are commenting on the ensuite, living areas, the flow through to the alfresco area, and the separate pantry/fridge area as the main attractions."

Inside, a children's wing with three bedrooms, a bathroom and separate powder room is located to the front of the home.

The theatre room is on the opposite side of the house to avoid noise issues while the study further down the hall is of good size and handy to the living areas.



Red tiles in the kitchen provide a splash of colour to the Lotus at Millbridge.

The main suite is to the rear, and includes direct access to the outdoors.

The space is highlighted by the luxurious ensuite where a low wall shields a deep bath set

in a tiled hob. A wide vanity unit, big shower recess and separate toilet complete the resort-style ensuite.

The open-plan living and dining zone is at the heart of the

home, overlooked by the galley-style kitchen which has abundant storage space including overhead cupboards.

In addition, a separate area nearby houses a large walk-in

pantry, a double fridge recess with storage above and an appliance cupboard to keep clutter out of sight.

The home is finished with a high level of specifications throughout and the exterior is fully rendered to complete the package.

Versions of the Lotus are available from \$204,365. Until the end of the month, buyers signing up to build the Lotus or any other Summit display home can choose a "summer sensation" package which includes ducted reverse-cycle, air-conditioning and a solar heating system for \$5999.



THE LOTUS

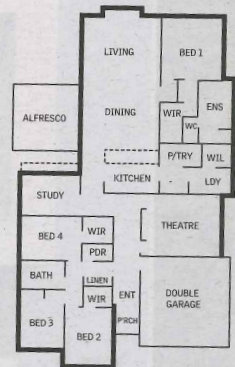
ADDRESS: Millbridge Boulevard, Millbridge

PRICE: \$284,500

BUILDER: Summit Homes South West

PHONE: 9722 0300

Four bedrooms, two bathrooms plus powder room, large kitchen with separate walk-in pantry, study, home theatre, alfresco area.



Perth Metro: 9333 0888
South West: 9722 0300

